



AQUARIUS ENGINEERS PVT. LTD.

Concrete Pumps, Batching Plants, Boom Pumps



CONCRETE BOOM PUMPS



Salient Features:

Slave Engine Design

- ▶ Fuel efficient, reduces per cubic meter cost
- ▶ Reduced erection & commissioning time
- ▶ Reduced installation expenses
- ▶ Enhanced service life of prime mover
- ▶ Enhanced power transmission efficiency due to direct drive

Remote Control

- ▶ State-of-art handy & lightweight cable remote control
- ▶ Unit with all the pump & boom functions in-built
- ▶ Wireless control – optional

Centralised Oil Lubrication System

- ▶ For selected points & also easy access, manual grease lubrication system to all points

Boom Material

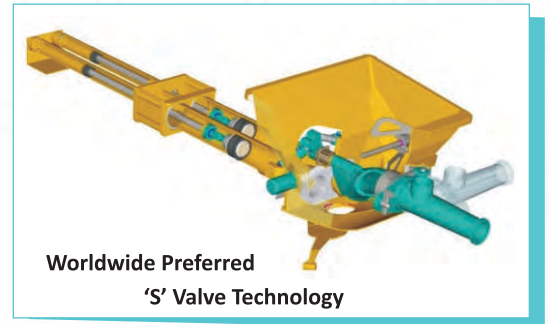
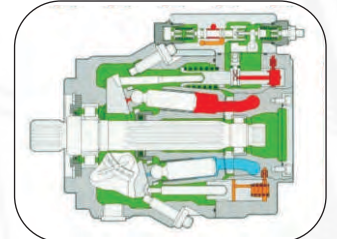
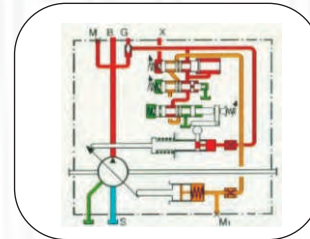
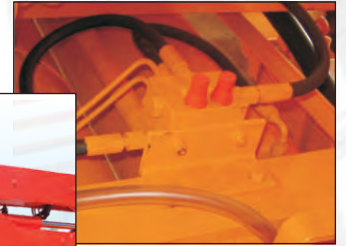
- ▶ Boom made of high strength alloy steel gives maximum strength & performance and minimum weight of the structure

Modular Type Boom Control Block

- ▶ Occupies less space & is adaptable to proportional boom movement
- ▶ Two-hand operation control of outriggers ensures safety in operation

Fully Hydraulic Open Loop Control System

- ▶ The pump regulator protects the hydraulic system from overheating & engine from overloading
- ▶ The regulator also helps in output regulation & improved fuel efficiency

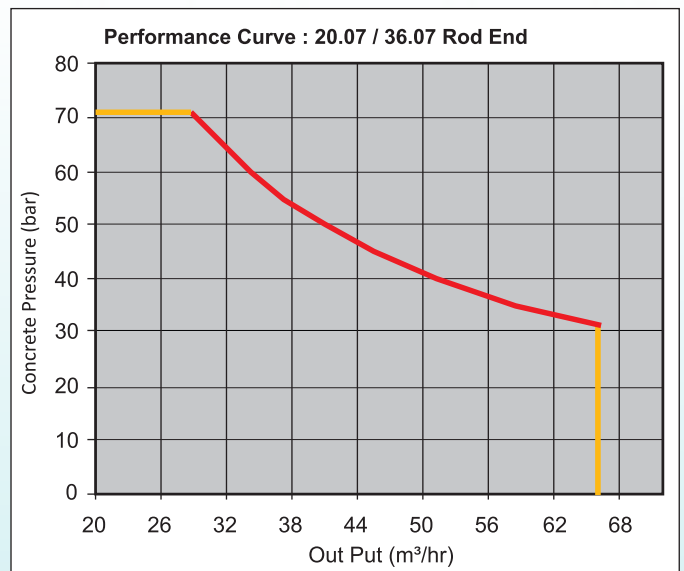
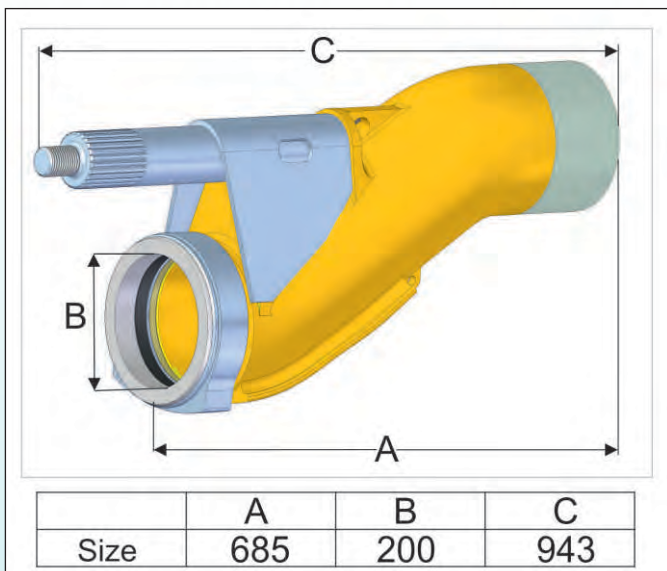


Technical Specifications:

BOOM				
Model Specifications	Unit	20.07	36.07	36.09
Arms	no.	3	4	4
Boom Folding		Z	Z	Z
Chassis Allowable GVW	kg	16000	25000	25000
Horizontal Reach (max.)	m	16.4	31.5	31.5
Vertical Reach (max.)	m	20	35.5	35.5
Reach Depth	m	9.5	23.4	23.4
Unfolding Height	m	5.5	8.1	8.1
Slewing Range	deg	365	370	370
Delivery Line Diameter	mm	125	125	125
Length of End Hose (DN 125)	m	3	3	3
Max. Hydraulic Pressure	bar	300	300	300
Electrical System	V	24	24	24
Power Drive Slave Engine	kW	82	82	82

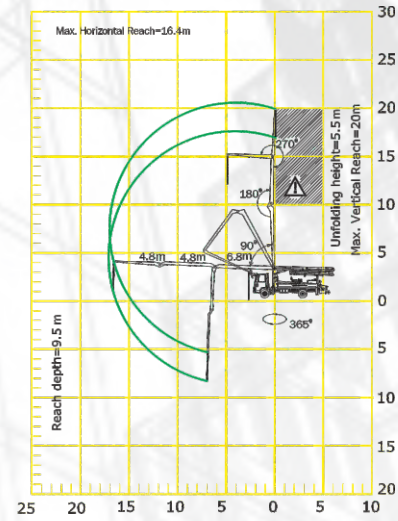
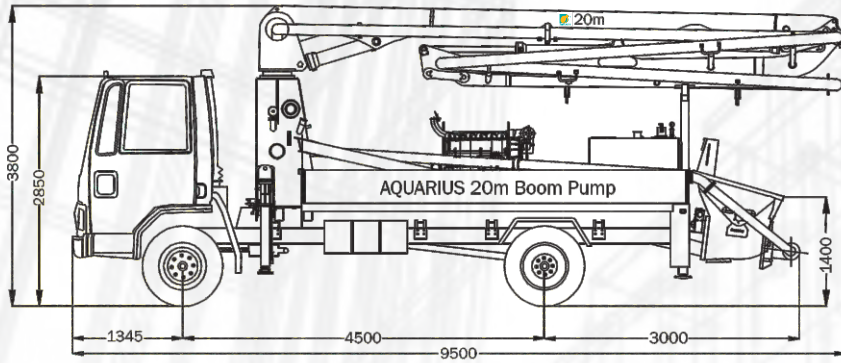
CONCRETE PUMP				
Model Specifications	Unit	20.07	36.07	36.09
Concrete Output Max. Theoretical	m ³ /hr	65	65	85
Concrete Pressure Max. Theoretical	bar	71	71	54
No. of Strokes/min	no.	25	25	25
Delivery Cylinder Diameter	mm	200	200	230
Piston Stroke Length	mm	1400	1400	1400
Hydraulic Transmission Ratio (Rod Side)		1:4.9	1:4.9	1:6.5
Easy Clean Hopper Capacity	l	600	600	600
Water Tank Capacity	l	500	500	500

Largest & Longest 'S' Valve

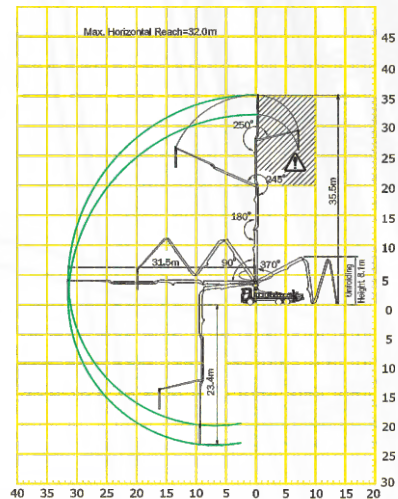
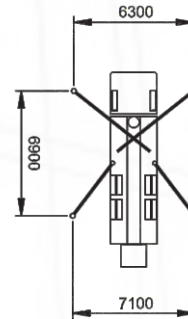
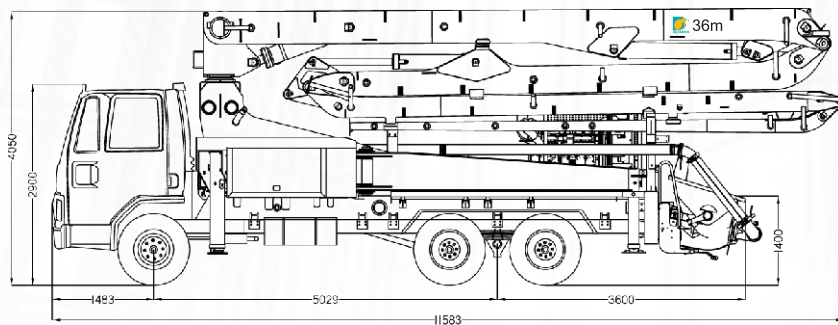


▶ Reach Diagram:

Reach Diagram 20m Boom (Z Fold)



Reach Diagram 36m Boom (Z Fold)



Range in which you must not work with the end hose.

Performance of equipment is based on standard working conditions. Design / Specifications can be changed without prior notice.



® AQUARIUS ENGINEERS PVT. LTD.
Concrete Pumps, Batching Plants, Boom Pumps

'Aquarius House', Sheelavihar Colony, Off Karve Road,
 Pune 411 038. INDIA Tel.: +91 20 2544 5227 Fax: +91 20 2544 5228
 E-mail: enquiries@aquariusengineers.biz
 Web: www.aquariusengineers.biz

Mfg. by: Putzmeister India Pvt. Ltd.
 190, 191, Kundaim Industrial Estate, Kundaim, Goa 403 115. India

Local Contact: